

BIO-MEDICAL WASTE

Infectious waste (Non plastic)



YELLOW

- Infectious dressing material like bandages gauze, cotton etc
- Human organs, body parts and tissues
- Blood bags
- Discarded cytotoxic medicines
- Discarded/expired medicines
- Personal protective equipment- disposable gown, mask, cap

Infectious waste (Plastic)



Red

- Used and Disposable plastic items like...
- Blood Bags
 - Infectious I, V, sets
 - Cut_plastic / latex gloves
 - Infectious plastic tubings
 - Rubber catheters, injections, syringes, tubings i.v, bottles

Infectious sharp waste



Blue

- All types of glass bottles and articles,
- Outdated & discarded medicines
- Glass Ampoules
- Injection Vials

Cytotoxic Waste



BLACK

- Cytotoxic Waste
- Radio Active Substance Waste
- Expiry Date Medicine
- Needles without syringes, blades, sharps and all metal articles

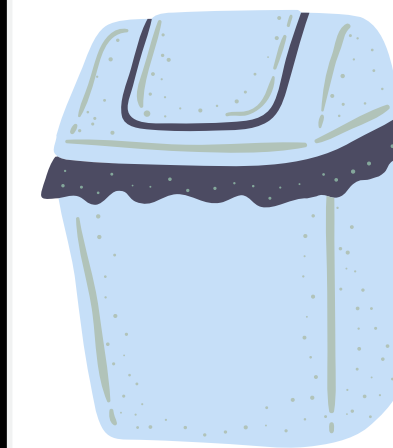
Recyclable Waste



Green

- Used for wet and biodegradable wastes.
- Items such as kitchen, plant and animal origin.
- Rotten eggs, fruits, vegetables and peels, coconut shells, tea bags.
- Used tea powder, left-over food, garden waste, etc.

Infectious & Injurious sharp waste



**Puncture
Proof**

- Sharp objects:- Needles, Syringes, Lancets, Scalpels, Razor blades, Surgical instruments & Broken glass,
- Dental instruments (e.g., dental drills, dental picks)
- Orthodontic wires
- Infusion sets, Cannulas, Trocars, Broaches & Acupuncture needles